


Bellwork - Week 10-Q4

Go to katundra.com>classroom> and complete the End of the Year Survey (complete if you haven't already).

 Odyssey JR/SR Final Exam Schedule May 21-24				
Monday 5/20	Tuesday 5/21	Wednesday 5/22	Thursday 5/23	Friday 5/24
Regular Day 8:55-4:08	Regular Day 8:55-4:08	Early Release Day 8:55-2:45	Early Release Day 8:55-2:45	Early Release Day 8:55-2:45
<ul style="list-style-type: none"> Students will follow the normal daily schedule Teachers will conduct exam review activities 	7th Period 8:55 – 11:45 (Final) 4 th Period 11:50 – 1:20 (Lunch) 3 rd Period 1:25 – 2:16 5 th Period 2:21 – 3:12 6 th Period 3:17 – 4:08	<u>First Period Exam</u> 8:55 am to 11:45 am <u>Second Period Exam</u> 11:50 am to 2:45 pm (Teachers/Students are to go to lunch when their Second Period teacher normally goes to lunch in Fourth Period)	<u>Third Period Exam</u> 8:55 am to 11:45 am <u>Fourth Period Exam</u> 11:50 am to 2:45 pm (Teachers/Students are to go to lunch today like any normal day during fourth period)	<u>Fifth Period Exam</u> 8:55 am to 11:45 am <u>Sixth Period Exam</u> 11:50 am to 2:45 pm (Teachers/Students are to go to lunch when their Sixth Period teacher normally goes to lunch in Fourth Period)

Thank you for blessing my school year!

Monday-Instruction

In today's video the artist will show you 3 easy watercolor painting ideas for beginners step by step that you can use to practice the basic watercolor painting techniques: wet on wet and wet on dry while also practicing different basic washes! The artist will show you how to paint a blue sky, sunset mountain landscape and a dark night sky with stars!





Even if you're not done submit your work by the following time:

5th per: 2:00 pm

6th per: 3:00 pm

7th per: 3:58 pm

When you're done submit to Artsonia: [WK 10_landscape](#)

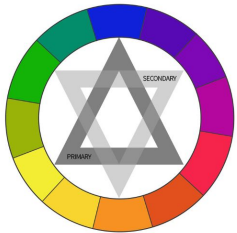
Artsonia Code: [JPPT-BWDB](#)

Bellwork

Week 8-Q4

Directions:

Divide your sketchbook paper into 6 squares. Color Schemes Color schemes are arrangements of colors within a work based on the locations of colors on a color wheel. Using a specific color scheme within a work creates harmony and unity. Popular color schemes include: monochromatic, complimentary, analogous, primary, secondary, split-complimentary, and color tetrads.



Monday:

Write the definition below:

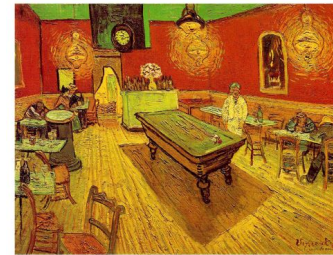
Monochromatic - literally means one (mono) color (chroma). So a monochromatic color scheme is made up of one color and it's shades and tints.



Tuesday:

Write the definition below:

Complimentary - colors found directly across from each other on the color wheel. Complimentary color schemes provide strong contrast. Ex. Blue and orange



Wednesday:

Write the definition below:

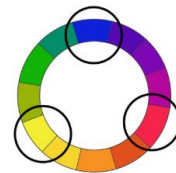
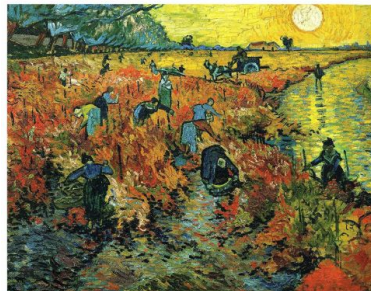
Analogous - colors that are next to each other on the color wheel. When used as a color scheme, analogous colors can be harmonious. Ex. Blue, blue-green, green, and yellow-green



Thursday

Write the definition below:

Primary - the primary colors - red, yellow, and blue.



Friday

Even if you tested make sure you make-up the days you missed.

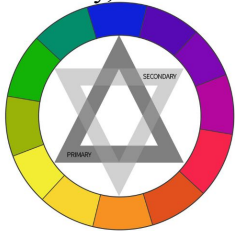
Make sure you have uploaded your bellwork.

Bellwork

Week 9-Q4

Directions:

Divide your sketchbook paper into 6 squares. Color Schemes Color schemes are arrangements of colors within a work based on the locations of colors on a color wheel. Using a specific color scheme within a work creates harmony and unity. Popular color schemes include: monochromatic, complimentary, analogous, primary, secondary, split-complimentary, and color tetrads.



Monday:

Write the definition below:

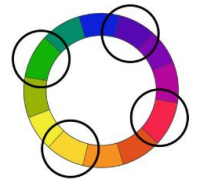
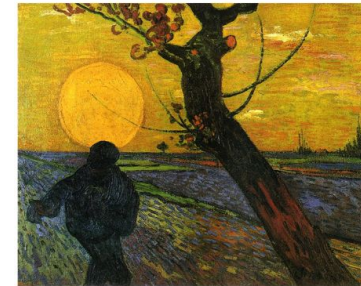
Secondary - the secondary colors - orange, purple, and green



Tuesday:

Write the definition below:

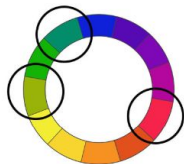
Tetrad - four colors that are equidistant from each other on the color wheel.



Wednesday:

Write the definition below:

Split-complimentary - three colors - a single color and its compliment's closest analogous colors. Ex. orange, blue-green, and blue-purple.



Thursday

After learning about the 7 different color schemes from this week and the previous, which color scheme would you like to use to for your final?

Make sure you have uploaded your bellwork.

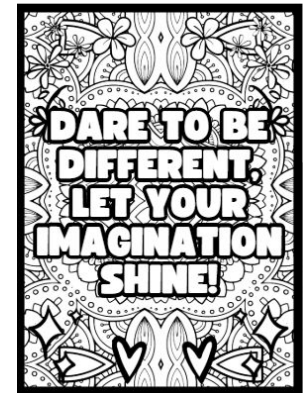
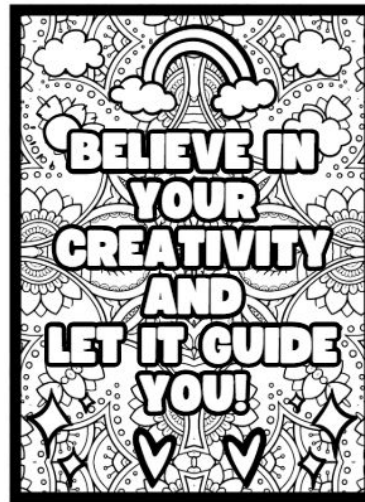
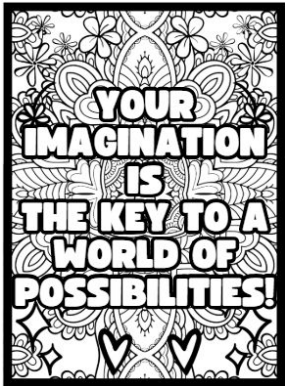
Friday

Even if you tested make sure you make-up the days you missed.

Make sure you have uploaded your bellwork.

Final Exam -Art Therapy Time!!!

Directions: Choose a coloring sheet that I have provided. Write the name of the color scheme on the back of your paper along with the colors you're going to use to complete it. You're allowed to listen to your music as you color (only if I'm with you). Remember to be at a level 0 during the exam. When you're done upload it to Artsonia and complete the artist statement questions. Then hand in the physical copy to the teacher. In order to get a passing grade your coloring has to match the color scheme you chose. You got this because you are truly amazing and you are wonderfully made!



When you're done submit to Artsonia: **Final Exam**
Artsonia Code: **JPPT-BWDB**