

Classroom Procedures

1. Entering Class Procedures

Conversation: Level 1

Help: Ask 3 before me

Activity: Grab your sketchbook bin and bring it to your desk.
Place your backpack in the “Backpack Parking Zone”.

Take out your drawing utensil(s).

Movement: Materials Cart

Participation: Preparing for Class

Sound: Instructor’s Music

2. Beginning of Class Procedures

Conversation: Level -0

Help: Raise your Hand

Activity: Warm-up, Free-Draw, Agenda

Movement: Materials Cart

Participation: Drawing and Writing

Sound: Instructor’s Music

3. Instructional Procedures

Conversation: Level -0

Help: Raise your Hand

Activity: Receiving Instruction

Movement: None

Participation: Listening, Drawing &/or Writing

Sound: None

4. Independent Procedures

Conversation: Level -1

Help: Ask 3 Before Me

Activity: Independent Work

Movement: Materials Cart and Restroom

Participation: Drawing/ Reading/ Writing

Sound: Instructor’s Music

2d1
Bellwork
Shapes
Week 7-Q2

Directions:

Read the box for the appropriate day and complete the task. You have 5 mins.

Monday

Directions: In your box, draw the following

Draw a line down the middle of your box. On the left side, fill the space with geometric shapes (circles, squares, triangles). On the right, fill the space with organic shapes (blobs, wavy forms, leaf shapes).

Tuesday

Directions: In your box, draw the following

Draw the outline of a tree using geometric shapes (e.g., triangle for the trunk, circles for leaves). Next, redraw the same tree using organic shapes.

Wednesday

Directions: In your box, draw the following

Start with one large geometric shape (e.g., a square). Turn it into something organic (e.g., a cloud, puddle, or animal) by adding details or altering its edges.

Instrucciones: En tu cuadro, dibuja lo siguiente

Comience con una forma geométrica grande (por ejemplo, un cuadrado). Conviértelo en algo orgánico (por ejemplo, una nube, un charco o un animal) agregando detalles o alterando sus bordes.

Thursday

Directions: In your box, draw a simple abstract composition using only 5 geometric shapes and 5 organic shapes. Overlap them to make the design interesting.

Instrucciones: En tu caja, dibuja una composición abstracta simple usando solo 5 formas geométricas y 5 formas orgánicas. Superpóngalos para que el diseño sea interesante.

Submit Bellwork to Artsonia

Friday

Write in your Student Planner the Agenda.

Planner check is today

Directions: In your student planner, write the agenda from below.

W.A.P. S. Week 7
Mon. 12-2-24

Essential Question:
What is a shape?

What will I learn :

The student will learn various aspects regarding the element of art, shape including the definition of shape, geometric and organic shapes, positive and negative shapes, and how shape can be used to draw representationally.

How I will learn it? (Agenda)

***Show presentation on shapes**

***Take notes**

How do I know I learned it?

When I can score at least a 3 on the scale

4	I can correctly complete this activity innovatively.
3	I can correctly complete this activity independently
2	I can correctly complete this activity using peers assistance
1	I can correctly complete this activity using teacher assistance

Reminders:

- Find assignment info on katundra.com
- Submit assignments on Artsonia

Grading Schedule:

- Monday 1st and 2nd per
- Tuesday 3rd and 5th
- Wednesday 6th and 7th

Directions: In your student planner, write the agenda from below.

W.A.P. S. Week 7
Tues. 12-3-24

Essential Question:

What are geometric shapes and how are they different from organic shapes?

What will I learn :

The student will learn various aspects regarding the element of art, shape including the definition of shape, geometric and organic shapes, positive and negative shapes, and how shape can be used to draw representationally.

How I will learn it? (Agenda)

(6th Graders testing)

***Draw Shape Mash-Up**
Exercise Day 1 of 2

How do I know I learned it?

When I can score at least a 3 on the scale

4	I can correctly complete this activity innovatively.
3	I can correctly complete this activity independently
2	I can correctly complete this activity using peers assistance
1	I can correctly complete this activity using teacher assistance

Reminders:

- Find assignment info on katundra.com
- Submit assignments on Artsonia

Grading Schedule:

Monday 1st and 2nd per
Tuesday 3rd and 5th
Wednesday 6th and 7th

Directions: In your student planner, write the agenda from below.

W.A.P. S. Week 7
Wed. 12-4-24

Essential Question:

What are geometric shapes and how are they different from organic shapes?

What will I learn :

The student will learn various aspects regarding the element of art, shape including the definition of shape, geometric and organic shapes, positive and negative shapes, and how shape can be used to draw representationally.

How I will learn it? (Agenda)

(7th Graders testing)

***Complete Shape Mash-Up**
Design Day 2 of 2

How do I know I learned it?

When I can score at least a 3 on the scale

4	I can correctly complete this activity innovatively.
3	I can correctly complete this activity independently
2	I can correctly complete this activity using peers assistance
1	I can correctly complete this activity using teacher assistance

Reminders:

- Find assignment info on katundra.com
- Submit assignments on Artsonia

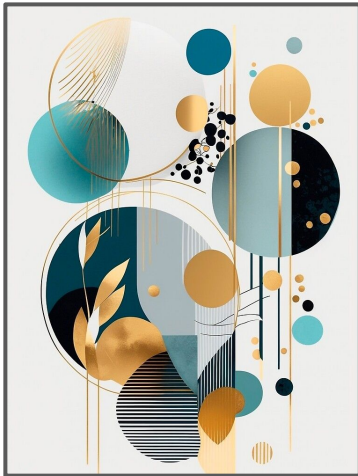
Grading Schedule:

Monday 1st and 2nd per
Tuesday 3rd and 5th
Wednesday 6th and 7th

Shape Mash-Up: Geometric Meets Organic

Objective: *The goal is to explore the differences and relationships between the two types of shapes.*

Directions: Today, you'll create a drawing that mixes **geometric shapes** (like squares and triangles) with **organic shapes** (like leaves and clouds). Start by drawing **5 large geometric shapes** and **5 medium organic shapes**, making sure some of them **overlap** to create depth. Add **variety** by making the shapes different sizes, angles, and styles, and use **repetition** by adding smaller versions of the shapes throughout your drawing. Finally, bring your composition to life by shading or coloring the shapes—use solid tones for geometric shapes and patterns or textures for organic shapes. Focus on balancing the two types of shapes to make your artwork dynamic and interesting!



Objetivo: El objetivo es explorar las diferencias y relaciones entre los dos tipos de formas.

Instrucciones: Hoy crearás un dibujo que combine formas geométricas (como cuadrados y triángulos) con formas orgánicas (como hojas y nubes). Comienza dibujando 5 formas geométricas grandes y 5 formas orgánicas medianas, asegurándote de que algunas de ellas se superpongan para crear profundidad. Agregue variedad haciendo que las formas sean de diferentes tamaños, ángulos y estilos, y use la repetición agregando versiones más pequeñas de las formas a lo largo de su dibujo. Finalmente, dé vida a su composición sombreando o coloreando las formas; use tonos sólidos para formas geométricas y patrones o texturas para formas orgánicas. ¡Concéntrate en equilibrar los dos tipos de formas para que tu obra de arte sea dinámica e interesante!

Shape Mash-Up: Geometric Meets Organic

1. Discuss the Two Types of Shapes (5 minutes)

- **Geometric shapes** are precise and sharp, like squares, triangles, or circles.
- **Organic shapes** are soft, flowing, and natural, like leaves, clouds, or waves.

Today, you'll mix these two types of shapes to create a balanced and interesting composition using **overlapping**, **variety**, and **repetition**!

2. Start Drawing Shapes (10 minutes)

- Begin by drawing **5 large geometric shapes**. Use a ruler if needed, but feel free to place the shapes at angles or in interesting positions.
- Next, add **5 medium organic shapes**. These should overlap or connect with some of the geometric shapes. Think about how they interact.
- Use **overlapping** to create depth. Let some shapes go behind or in front of others.

3. Add Variety and Repetition (10 minutes)

- **Variety**: Make each shape different! Try different sizes, angles, or patterns for your shapes.
- **Repetition**: Add smaller versions of the shapes (both geometric and organic) throughout your drawing. Repeating shapes will help tie your composition together.

4. Add Shading or Color (10 minutes)

- Use shading or color to bring your shapes to life:
 - Shade or color **geometric shapes** with solid, even tones.
 - Add texture, patterns, or gradients to the **organic shapes** for contrast.
- Pay attention to the **overlaps**—decide if you want overlapping areas to be darker, lighter, or patterned to stand out.

Directions: In your student planner, write the agenda from below.

W.A.P. S. Week 7
Wed. 12-4-24

Essential Question:

What are geometric shapes and how are they different from organic shapes?

What will I learn :

The student will learn various aspects regarding the element of art, shape including the definition of shape, geometric and organic shapes, positive and negative shapes, and how shape can be used to draw representationally.

How I will learn it? (Agenda)

(7th Graders testing)

***Complete Shape Mash-Up**
Design Day 2 of 2

How do I know I learned it?

When I can score at least a 3 on the scale

4	I can correctly complete this activity innovatively.
3	I can correctly complete this activity independently
2	I can correctly complete this activity using peers assistance
1	I can correctly complete this activity using teacher assistance

Reminders:

- Find assignment info on katundra.com
- Submit assignments on Artsonia

Grading Schedule:

Monday 1st and 2nd per
Tuesday 3rd and 5th
Wednesday 6th and 7th

Directions: In your student planner, write the agenda from below.

W.A.P. S. Week 7
Thurs. 12-5-24

Essential Question:

Does my composition look balanced?

What will I learn :

The student will learn various aspects regarding the element of art, shape including the definition of shape, geometric and organic shapes, positive and negative shapes, and how shape can be used to draw representationally.

How I will learn it? (Agenda)

(8th Graders testing)

***Complete Shape Mash-Up Design**

How do I know I learned it?

When I can score at least a 3 on the scale

4	I can correctly complete this activity innovatively.
3	I can correctly complete this activity independently
2	I can correctly complete this activity using peers assistance
1	I can correctly complete this activity using teacher assistance

Reminders:

- Find assignment info on katundra.com
- Submit assignments on Artsonia

Grading Schedule:

Monday 1st and 2nd per
Tuesday 3rd and 5th
Wednesday 6th and 7th

In your Student Planner write the Agenda

Today is Friday:

Agenda:

-Receive Grade

-Submit work for wk7

Chair Drawing Using Negative Space



Objective: Students will develop their observational drawing skills by focusing on the **negative space** around and within a chair, rather than the chair itself. This exercise will help them better understand spatial relationships, improve accuracy in their drawings, and strengthen their ability to perceive shapes and proportions.

Summary: Draw the chair using negative space, focus on the empty areas **around and inside** the chair instead of the chair itself. Look closely at the shapes these spaces create, like the gaps between the legs or under the seat. Lightly outline these spaces with your pencil, avoiding any direct lines for the chair. Once you've outlined the negative spaces, shade or color them in, leaving the chair (positive space) blank. This will make the chair's shape appear through the negative space, helping you see and draw more accurately!

Chair Drawing Using Negative Space

Objective: Students will develop their observational drawing skills by focusing on the **negative space** around and within a chair, rather than the chair itself. This exercise will help them better understand spatial relationships, improve accuracy in their drawings, and strengthen their ability to perceive shapes and proportions.

- 1. Start with Observation:** Look closely at the chair. Focus on the empty spaces **around and within** the chair, not the chair itself. These empty areas are the **negative space**—what we'll draw.
- 2. Outline the Negative Space:** Use a pencil to lightly outline the shapes created by the spaces around and inside the chair. These might include gaps between the chair's legs, under the seat, or around the backrest.
- 3. Avoid Drawing the Chair Directly:** Do **not** outline the chair's edges. Instead, let the negative spaces define the chair's shape indirectly.
- 4. Fill the Negative Space:** Once the outlines are complete, shade or color the **negative space** around the chair, leaving the chair's shape (the positive space) blank.
- 5. Refine Your Work:** Double-check your edges and shading to make sure the negative spaces create a clear outline of the chair.



FIND
LOVE
PEACE
HOPE

"Come join us at First Priority! Let's grow together as a community that encourages one another and lets our light shine. Whether you're looking for a place to connect, share your faith, or just explore what it means to live with purpose, First Priority is a welcoming space for everyone. Let's build each other up and make a positive impact! See you there!"

Every: Friday @ 8:15-8:45

am

Where: Gym

Class Grade:

1st-79

A=7

F=2

2nd-77

A=11

F=6

3rd-75%

A=6

F=3

5th-81%

A=11

F=3

6th-82%

A=10

F=3

7th-80%

A=9

F=1

1st-78

D=6

F=1

2nd-75

D=2

F=6

3rd-74%

D=1

F=7

5th-81%

D=3

F=3

6th-82%

D=2

F=2

7th-73%

D=5

F=5

Today is Data Day which is a day to ask questions about your grade. And submit missing work.

1. Make sure you submit the following assignments today because the window will close at the end of class. If you don't make it then you'll need to submit it to the Make-Up Window. Each student will have the iPad for 10 minutes to submit the work.

WK 7_Bellwork

WK 7_Shape Mash Up

2. Check Grade in FOCUS and Submit Your Missing Assignments in Artsonia under **Make-Up Work** for partial credit

***You need to type the date and name of the assignment, as it appears in FOCUS. This will help me to place the grade under the appropriate assignment. ***

IF you have a question about the assignment check it on katundra.com

next,

3. Free Draw

Upload Your Work to Artsonia

1. Either Download the Artsonia App on your phone or Use the Web Browser and type in Artsonia.com
2. Click on ARTIST
3. Click on Class Portal
4. Type in the **School ID:** **Odyssey19** Access Code **JPPT-BWDB**
(If you don't have an account click on Add my name> complete the sections, including the full last name, the class is your period)
5. Click on All Students
6. Enter Your Name
7. Add Art
8. Select the name of the assignment:
9. Take a Picture
10. Crop the image if needed
11. Title the work
12. Type the Artist Statement
13. Submit to Teacher

6. *Clean-Up Procedures*

Conversation: Level -1

Help: Ask 3 Before Me

Activity: ***Art Organizer*** - provide guidance for work, ***Materials manager***- make sure materials are put away in the appropriate location, ***Sketchbook Supervisor***- switch out the sketchbook holder for the next period, ***Waste Watchdog*** - make sure the table and floor is clean.

Movement: Materials Zone and Backpack Zone

Participation: Cleaning

Sound: None

*** Please be aware that failing to adhere to the above will result in completing a behavior sheet.**