

Classroom Procedures

1. Entering Class Procedures

Conversation: Level 1

Help: Ask 3 before me

Activity: Grab your sketchbook bin and bring it to your desk.
Place your backpack in the “Backpack Parking Zone”.

Take out your drawing utensil(s).

Movement: Materials Cart

Participation: Preparing for Class

Sound: Instructor’s Music

2. Beginning of Class Procedures

Conversation: Level -0

Help: Raise your Hand

Activity: Warm-up, Free-Draw, Agenda

Movement: Materials Cart

Participation: Drawing and Writing

Sound: Instructor’s Music

3. Instructional Procedures

Conversation: Level -0

Help: Raise your Hand

Activity: Receiving Instruction

Movement: None

Participation: Listening, Drawing &/or Writing

Sound: None

4. Independent Procedures

Conversation: Level -1

Help: Ask 3 Before Me

Activity: Independent Work

Movement: Materials Cart and Restroom

Participation: Drawing/ Reading/ Writing

Sound: Instructor’s Music

2d1
Bellwork
Shapes
Week 9-Q2

Directions:

Read the box for the appropriate day and complete the task. You have 5 mins.

Monday

Directions: In your box, draw the following



Tuesday

Directions: In your box, draw the following



shutterstock.com · 452138950

Wednesday

Write
NO BW

Thursday

Write
NO BW
and

Submit to Artsonia

Submit Bellwork to Artsonia

Friday

**Write in your Student Planner
the Agenda.**

Planner check is today

Directions: In your student planner, write the agenda from below.

W.A.P. S. Week 9
Mon. 12-16-24

Essential Question:

How can geometric and organic shapes be used to enhance drawing skill?

What will I learn :

The student will learn various aspects regarding the element of art, shape including the definition of shape, geometric and organic shapes, positive and negative shapes, and how shape can be used to draw representationally.

How I will learn it? (Agenda)

-Watch Video on Shape

-Draw a cup using shapes

-Student Planner Check

How do I know I learned it?

When I can score at least a 3 on the scale

4	I can correctly complete this activity innovatively.
3	I can correctly complete this activity independently
2	I can correctly complete this activity using peers assistance
1	I can correctly complete this activity using teacher assistance

Reminders:

-Find assignment info on katundra.com

-Submit assignments on Artsonia

****12/20 Friday Make-up Window Closes for Q2**

Grading Schedule:

Monday 1st and 2nd per

Tuesday 3rd and 5th

Wednesday 6th and 7th

Directions: In your student planner, write the agenda from below.

W.A.P. S. Week 9
Tues. 12-17-24

Essential Question:

How can geometric and organic shapes be used to enhance drawing skill?

What will I learn :

The student will learn various aspects regarding the element of art, shape including the definition of shape, geometric and organic shapes, positive and negative shapes, and how shape can be used to draw representationally.

How I will learn it? (Agenda)

-Watch Video on Shape

-Draw a hand using shapes

How do I know I learned it?

When I can score at least a 3 on the scale

4	I can correctly complete this activity innovatively.
3	I can correctly complete this activity independently
2	I can correctly complete this activity using peers assistance
1	I can correctly complete this activity using teacher assistance

Reminders:

-Find assignment info on katundra.com

-Submit assignments on Artsonia

****12/20 Friday Make-up Window Closes for Q2**

Grading Schedule:

Monday 1st and 2nd per

Tuesday 3rd and 5th

Wednesday 6th and 7th

Directions: In your student planner, write the agenda from below.

W.A.P. S. Week 9
Wednesday 12-18-24

Essential Question:

How can geometric and organic shapes be used to enhance drawing skill?

What will I learn :

The student will learn various aspects regarding the element of art, shape including the definition of shape, geometric and organic shapes, positive and negative shapes, and how shape can be used to draw representationally.

How I will learn it? (Agenda)

-Read over project

-Start project and complete the first step for the mid-term

-Submit assignments for this week

How do I know I learned it?

When I can score at least a 3 on the scale

4	I can correctly complete this activity innovatively.
3	I can correctly complete this activity independently
2	I can correctly complete this activity using peers assistance
1	I can correctly complete this activity using teacher assistance

Reminders:

-Find assignment info on katundra.com

-Submit assignments on Artsonia

****12/20 Friday Make-up Window Closes for Q2**

Grading Schedule:

Monday 1st and 2nd per

Tuesday 3rd and 5th

Wednesday 6th and 7th

Directions: In your student planner, write the agenda from below.

W.A.P. S. Week 9
Friday 12-20-24

Essential Question:

How can geometric and organic shapes be used to enhance drawing skill?

What will I learn :

The student will learn various aspects regarding the element of art, shape including the definition of shape, geometric and organic shapes, positive and negative shapes, and how shape can be used to draw representationally.

How I will learn it? (Agenda)

-Read over project

-Start project and complete the first step for the mid-term

-Submit assignments for this week

How do I know I learned it?

When I can score at least a 3 on the scale

4	I can correctly complete this activity innovatively.
3	I can correctly complete this activity independently
2	I can correctly complete this activity using peers assistance
1	I can correctly complete this activity using teacher assistance

Reminders:

-Find assignment info on katundra.com

-Submit assignments on Artsonia

****12/20 Friday Make-up Window Closes for Q2**

Grading Schedule:

Monday 1st and 2nd per

Tuesday 3rd and 5th

Wednesday 6th and 7th

Drawing with Shapes

Before:

Directions: You have 3 minutes to draw the cup below.



Cup

After

Directions: After the lesson, draw the cup using shapes.



Before:

Directions: You have 3 minutes to draw the hand below.



shutterstock.com · 452138950

After

Directions: After the lesson, draw the hand using shapes.



Before:

Directions: You have 3 minutes to draw the cup below.



Drawing with Shapes

Before:

Directions: You have 3 minutes to draw the cup below.



Cup

After

Directions: After the lesson, draw the cup using shapes.

Before:

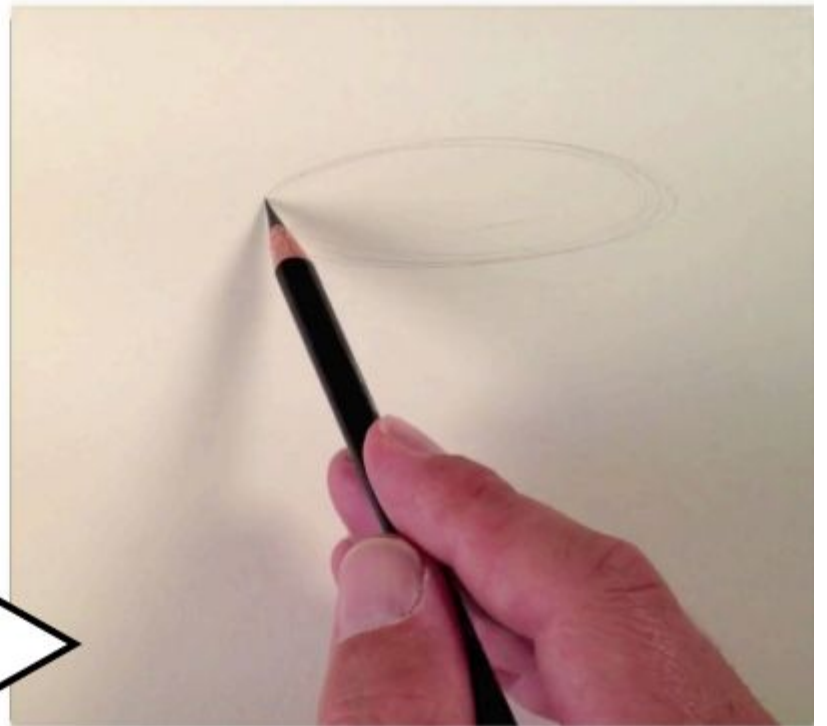
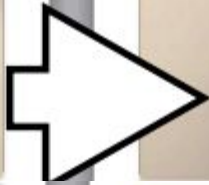
Directions: You have 3 minutes to draw the hand below.

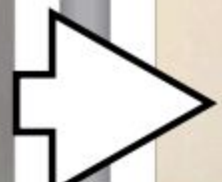
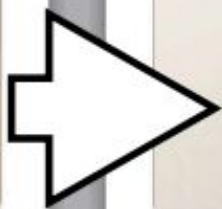


shutterstock.com · 452138950

After

Directions: After the lesson, draw the hand using shapes.



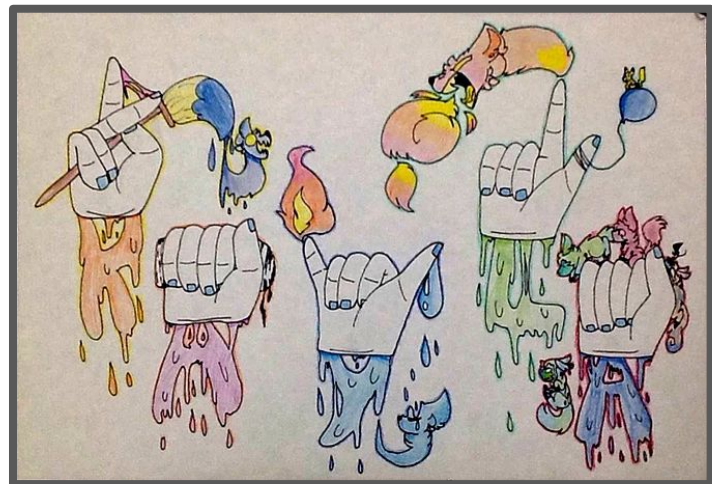




The drawing can be further developed by adding hatching to the fabric that surrounds the mug. Doing this not only furthers the illusion of a light source, but it also adds contrast to the drawing.

The concept of drawing with shapes can be applied to virtually any subject, including subjects that many people consider to be difficult. Let's look at how this concept works with drawing hands.

ASL Hand Drawing Project



Florida Visual Arts Standards

VA.68.S.1.3: Use ideas from direct observation to create artwork.

VA.68.C.1.2: Use visual evidence and prior knowledge to reflect on multiple interpretations of works of art.

VA.68.O.3.1: Create artworks that demonstrate an understanding of organizational principles of design.

VA.68.F.3.2: Apply technology resources to develop artistic techniques and presentations.

VA.68.H.1.3: Explain the significance of personal artwork and how it can represent identity.

Objective: You will draw your hands forming your initials using American Sign Language (ASL). You'll learn to break down your hands into basic shapes and create a cool **abstract background** using geometric and organic shapes to make your artwork unique.

Summary: First, you will sketch your hands forming your initials using American Sign Language (ASL) by breaking them down into basic shapes like circles, ovals, and rectangles. Next, you'll refine your sketch by adding details such as fingernails, knuckles, and shading to make the hands look realistic. After that, you will design an abstract background using a mix of **geometric shapes** (like squares and circles) and **organic shapes** (curvy, free-flowing forms) to create balance and contrast. Finally, you'll add finishing touches by shading the hands for depth and refining the background to make your artwork unique and visually interesting.

ASL Hand Drawing Project Checklist

Hand Drawing: Realism and Detail

- I sketched 3 hands forming my first, middle, and last name initials using the correct ASL hand positions. ***This should be done for your Midterm***
- I started my hand drawing with **basic shapes** (square, cylinders, etc.) to get the proportions right.
- I added details like fingernails, knuckles, and creases to make my hands look realistic.
- I shaded my hands to create **depth** (using light and dark areas).

Abstract Background: Shapes and Composition

- My background includes a mix of **geometric shapes** (like squares, triangles, and circles).
- My background also includes **organic shapes** (curved, free-flowing shapes).
- I overlapped shapes and used layering to create an interesting composition.
- I balanced light and dark areas in the background to make my hands stand out.

Overall Effort and Presentation

- I took my time and worked neatly throughout the project.
- My hands and background are well-finished with no blank areas.
- I followed all the project steps and used my class time effectively.

Bonus Reflection (Optional):

- I can explain how my artwork represents my identity through ASL initials and creative choices.
- I can identify my favorite part of my drawing and what I improved on the most.

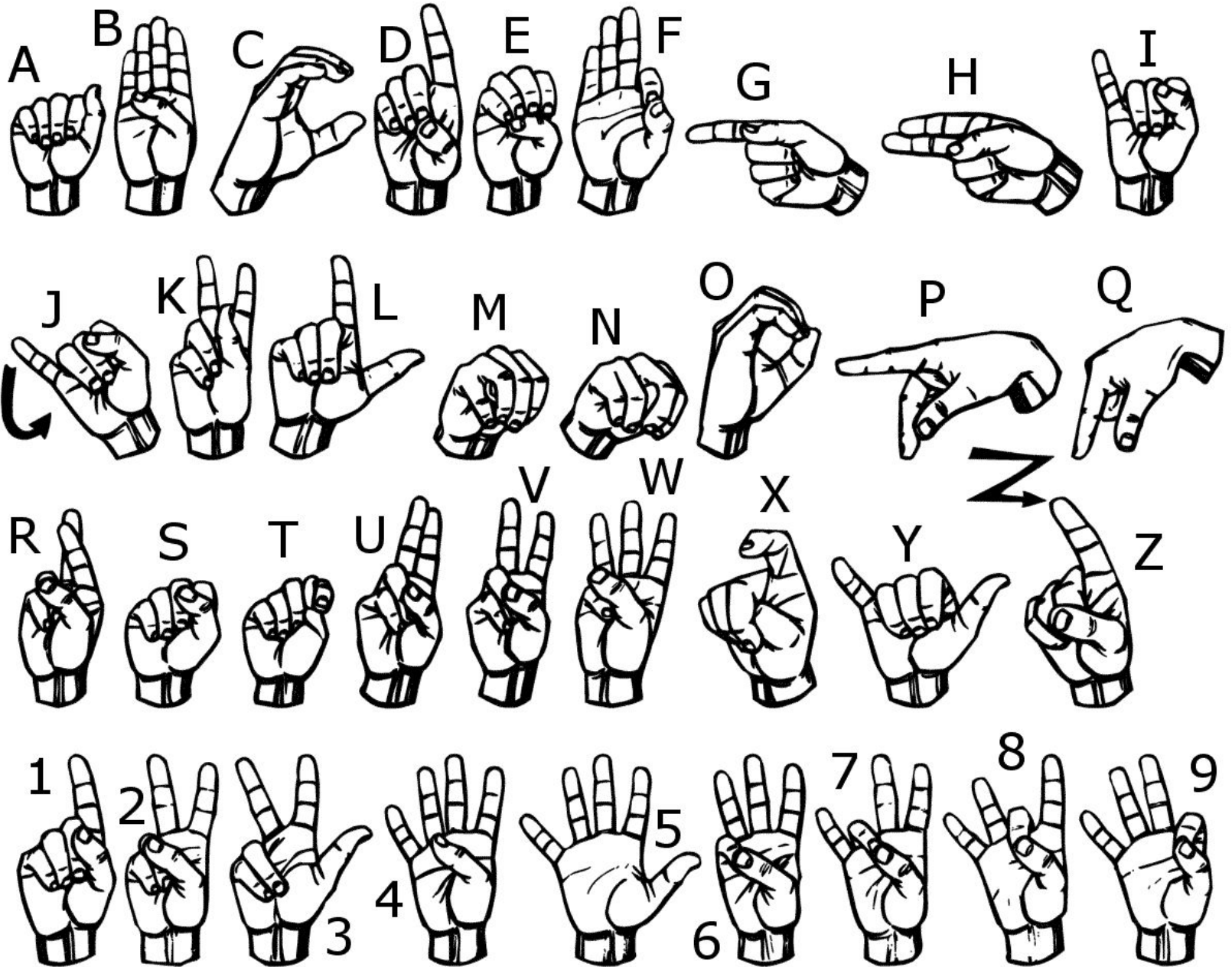
ASL Hand Drawing Project Checklist

Category	Excellent (20 pts)	Good (16 pts)	Needs Improvement (14pts)	Incomplete (12 pts)
Hand Drawing	Hands are accurately drawn with correct proportions, details (fingernails, knuckles), and realistic shading for depth.	Hands are mostly accurate with minor proportion or detail issues; shading adds some depth.	Hands lack accurate proportions, details, or shading; some effort shown.	Minimal effort; hands are missing proportions, details, or shading.
ASL Representation	Hands clearly show the correct ASL initials for all three letters (first, middle, last names).	Hands mostly show the correct ASL initials with slight inaccuracies.	Hands show some effort but do not clearly match ASL initials.	Hands do not match ASL initials or are incomplete.
Abstract Background	Background includes a balanced mix of geometric and organic shapes with strong composition, contrast, and attention to detail.	Background includes geometric and organic shapes with some balance and contrast.	Background lacks variety in shapes, balance, or contrast.	Background is incomplete, messy, or missing shapes.
Creativity	Artwork shows original ideas, creative use of shapes, and a personal touch that makes it unique and engaging.	Artwork shows some creativity and originality, with a few unique elements.	Artwork shows limited creativity, relying mostly on basic or repetitive ideas.	Artwork lacks creativity or originality and feels rushed or incomplete.
Effort and Presentation	Artwork is complete, well-presented, and shows exceptional care and effort.	Artwork is mostly complete and shows good effort and care.	Artwork is unfinished, messy, or lacks visible effort.	Minimal effort; artwork is incomplete or rushed.

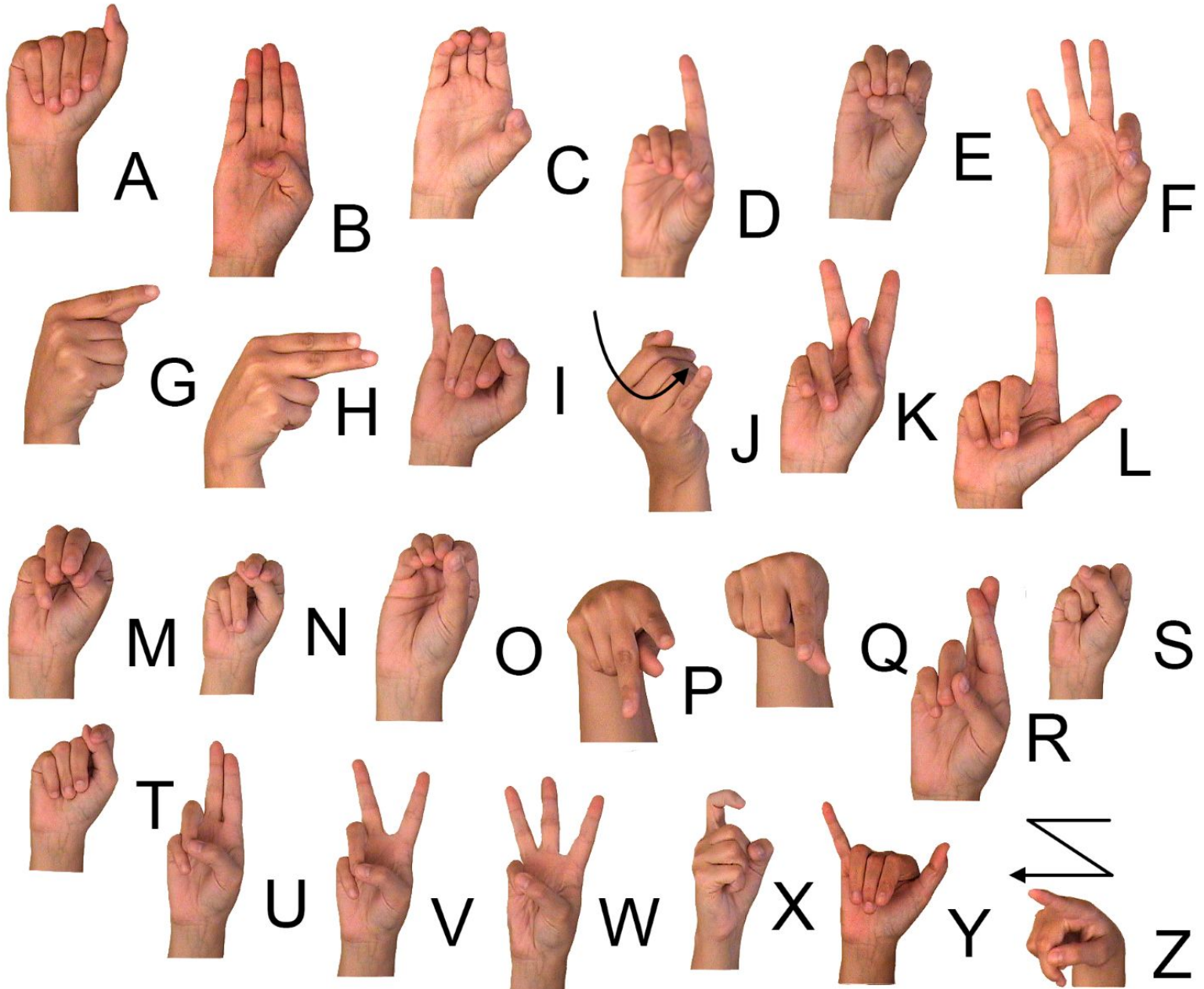
Reflection Questions:

1. How did breaking down your hands into shapes help you draw them more realistically?
2. What choices did you make to create a unique and interesting abstract background, and why?
3. How does your artwork represent your identity through the use of your ASL initials?
4. What part of your artwork are you most proud of, and what is one thing you would improve if you did this project again?

ASL Handout - Please Return to Mrs. Stewart



ASL Handout - Please Return to Mrs. Stewart



In Progress - ASL Hand Drawing Project - Student Examples

