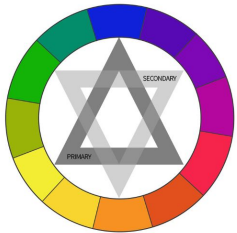


Bellwork

Week 8-Q4

Directions:

Divide your sketchbook paper into 6 squares. Color Schemes Color schemes are arrangements of colors within a work based on the locations of colors on a color wheel. Using a specific color scheme within a work creates harmony and unity. Popular color schemes include: monochromatic, complimentary, analogous, primary, secondary, split-complimentary, and color tetrads.



Monday:

Write the definition below:

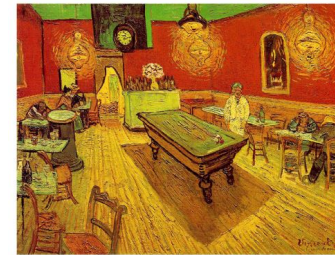
Monochromatic - literally means one (mono) color (chroma). So a monochromatic color scheme is made up of one color and it's shades and tints.



Tuesday:

Write the definition below:

Complimentary - colors found directly across from each other on the color wheel. Complimentary color schemes provide strong contrast. Ex. Blue and orange



Wednesday:

Write the definition below:

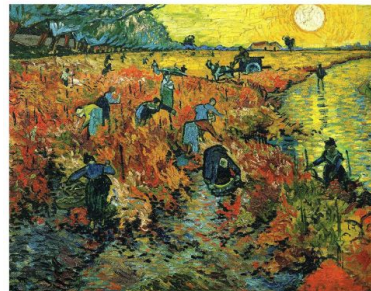
Analogous - colors that are next to each other on the color wheel. When used as a color scheme, analogous colors can be harmonious. Ex. Blue, blue-green, green, and yellow-green



Thursday

Write the definition below:

Primary - the primary colors - red, yellow, and blue.

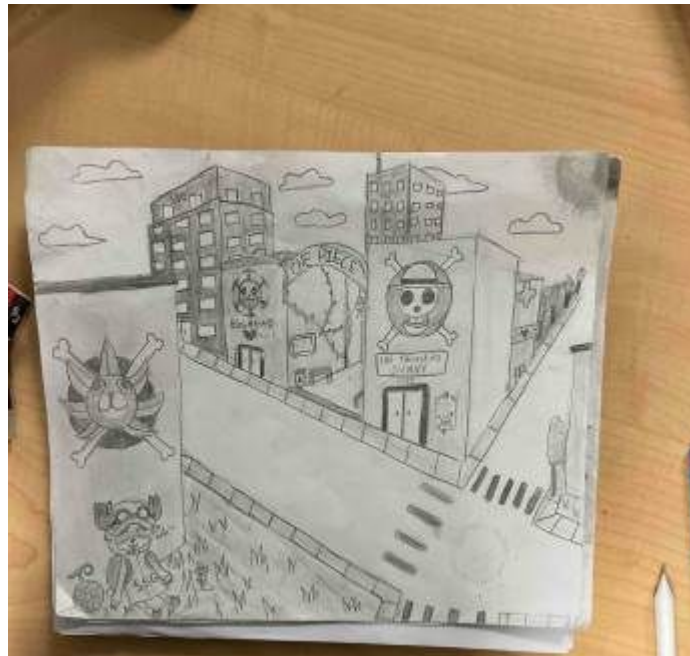


Friday

Even if you tested make sure you make-up the days you missed.

Make sure you have uploaded your bellwork.

YOU HAVE 5 MINS. TO SUBMIT YOUR FINAL PROJECT



Make-up Monday - Week 8 q4

Today is Make-Up day which is a day to make-up missing work. After today I will no longer accept late work for weeks 1-5.

1. Check Grade in FOCUS and Submit Your Missing Assignments in Artsonia under **Make-Up Work** for partial credit

***You need to type the date and name of the assignment, as it appears in FOCUS.**

This will help me to place the grade under the appropriate assignment. *

IF you have a question about the assignment check it on katundra.com next,

2. Free draw while experimenting with different subjects or materials

Tuesday-Thematic City in Two Point Perspective Reflection Questions

Directions: Complete the following questions about your project, in complete sentences.

1. How did understanding the principles of two-point perspective contribute to the creation of your cartoon cityscape?
2. Describe the theme you chose for your cityscape. How did you integrate this theme into your design, and what inspired your creative choices?
3. Discuss the process of adding details and architectural elements to your cityscape. Which elements did you find most challenging to incorporate, and how did you overcome these challenges?
4. Explain the role of shading in creating depth and dimension within your cityscape. How did you approach shading different objects and surfaces within the composition?
5. Reflect on the overall craftsmanship and presentation of your cityscape. What aspects of your work are you most proud of, and what areas do you think could be improved for future projects?

Tuesday-Thematic City in Two Point Perspective Rubric

Grader's Name:	0-None	1-Below	2-Approaching	3 - Met	4- Above
<p>Understanding of Two-Point Perspective: Demonstrates a clear understanding of two-point perspective with accurate placement of vanishing points and consistent application throughout the cityscape.</p>	0	12	15	17	20
<p>Creativity and Theme Integration Creatively integrates a cohesive theme into the cityscape design, with imaginative details and thoughtful execution.</p>	0	12	15	17	20
<p>Detail and Architectural Elements Includes intricate details and architectural elements that enhance the overall realism and visual interest of the cityscape. Buildings exhibit varied designs, with attention to architectural features such as windows, doors, roofs, and facades. Trees and roads are carefully rendered to complement the cityscape.</p>	0	12	15	17	20
<p>Shading and Depth: Utilizes shading effectively to create depth and dimension within the cityscape, with accurate depiction of light sources and consistent application of shading techniques. Shading adds realism and enhances the three-dimensional quality of objects within the composition.</p>	0	12	15	17	20
<p>Craftsmanship and Presentation Shows exceptional craftsmanship and attention to detail in the execution of the cityscape, with neatness, precision, and overall aesthetic appeal. Lines are clean, and colors are applied smoothly, enhancing the overall presentation of the artwork.</p>	0	12	15	17	20
Total Score (100)					

Tuesday-Thematic City in Two Point Perspective Reflection and Rubric

Project Rubric-Thematic Street in Two Point Perspective

Name: _____ Date: _____ Per: _____

Directions: Complete the questions about your Thematic Street in Two Point Perspective, using complete sentences. Have a peer to grade your art using the rubric below. Take a picture and submit this sheet to Artsonia.

Reflection Questions

- How did understanding the principles of two-point perspective contribute to the creation of your cartoon cityscape?

- Describe the theme you chose for your cityscape. How did you integrate this theme into your design, and what inspired your creative choices?

- Discuss the process of adding details and architectural elements to your cityscape. Which elements did you find most challenging to incorporate, and how did you overcome these challenges?

- Explain the role of shading in creating depth and dimension within your cityscape. How did you approach shading different objects and surfaces within the composition?

- Reflect on the overall craftsmanship and presentation of your cityscape. What aspects of your work are you most proud of, and what areas do you think could be improved for future projects?

Tuesday-Thematic City in Two Point Perspective Reflection and Rubric

Grader's Name:	0-None	1-Below	2-Approaching	3-Met	4-Above
Understanding of Two-Point Perspective: Demonstrates a clear understanding of two-point perspective with accurate placement of vanishing points and consistent application throughout the cityscape.	0	12	15	17	20
Creativity and Theme Integration Creatively integrates a cohesive theme into the cityscape design, with imaginative details and thoughtful execution.	0	12	15	17	20
Detail and Architectural Elements Includes intricate details and architectural elements that enhance the overall realism and visual interest of the cityscape. Buildings exhibit varied designs, with attention to architectural features such as windows, doors, roofs, and facades. Trees and roads are carefully rendered to complement the cityscape.	0	12	15	17	20
Shading and Depth: Utilizes shading effectively to create depth and dimension within the cityscape, with accurate depiction of light sources and consistent application of shading techniques. Shading adds realism and enhances the three-dimensional quality of objects within the composition.	0	12	15	17	20
Craftsmanship and Presentation Shows exceptional craftsmanship and attention to detail in the execution of the cityscape, with neatness, precision, and overall aesthetic appeal. Lines are clean, and colors are applied smoothly, enhancing the overall presentation of the artwork.	0	12	15	17	20
Total Score (100)					

Wednesday-*Experimenting with Watercolor -Pre instruction*

Directions: Write your name, date, period, and table color in the top right hand corner. Divide your paper in half. On the left side make random marks with the brush. Show line quality, thickness and thinness of the line. On the right side try to paint the three pears below.

On the right side try to paint the three pears below.

Mark Making



Pre Instruction

Write your name,
5-8-24,
period
table color



Wednesday-Experimenting with Watercolor -Pre instruction

Directions: Write your name, date, period, and table color in the top right hand corner. Divide your paper in half. On the left side make random marks with the brush. Show line quality, thickness and thinness of the line. On the right side try to paint the three pears below.



Thursday-*Experimenting with Watercolor -Pre instruction*

Directions: Write your name, date, period, and table color in the top right hand corner. When you're done upload to [WK 8_experimenting with watercolor](#) and then place it on the drying rack.

Pre Instruction

Write your name,
5-9-24,
Period
Table Color



Thursday-6th Period Challenge

Directions: Write your name, date, period, and table color in the top right hand corner.

Pre Instruction



After Instruction

Write your name,
5-9-24,
period
table color



Data Day - Week 8 q4

Today is Data Day which is a day to ask questions about your grade. And submit missing work.

1. Make sure you submit the following assignments today because the window will close today:

WK 8_Bellwork

WK 8_Reflection and Rubric

WK 8_experimenting with watercolor

WK 8_bird challenge 6th period

2. Check Grade in FOCUS and Submit Your Missing Assignments in Artsonia under **Make-Up Work** for partial credit

***You need to type the date and name of the assignment, as it appears in FOCUS.**

This will help me to place the grade under the appropriate assignment. *

IF you have a question about the assignment check it on katundra.com

next,

3. Free draw while experimenting with different subjects or materials